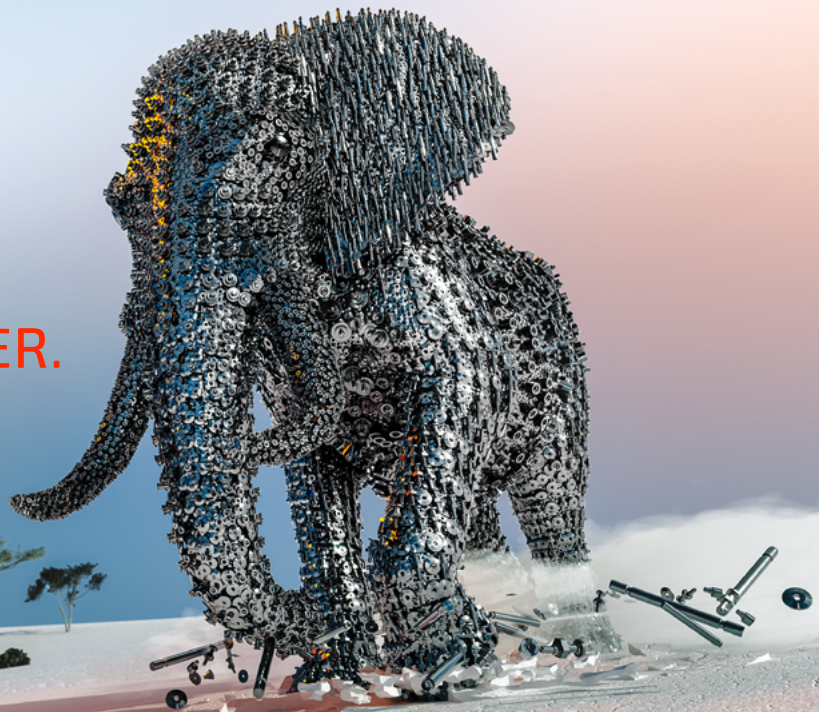


# A PART OF US. PRODUCTION POWER.



## MATERIALS

- Machining steel
- Tempered steel (C35, C45,...)
- Stainless steel (VA 1.4104 / 1.4305 / 1.4301...)
- Tooling steel
- Non-ferrous metals and alloys  
(various brass, aluminium alloys, aluminium bronze)

## FURTHER PROCESSING

- Grinding
- Barrel finishing
- Electropolishing
- Laser marking
- Thermal Treatment
- Galvanic treatment
- Thread Locking

## PARTS RANGE

- Eccentric turned parts
- CNC turned & milled parts
- Long and short turned parts

## TURNING RANGE

- Diameter: 3 mm to 25 mm
- Hexagon: Spanner width (SW) 5 to 19
- Length: 1 mm to 650 mm

## PRODUCTION LOT

- Sample production / small quantities (from 1 pc. up)
- To mass production (1 to x million pcs.)

## PROCESSING

- Turning (centric & eccentric)
- Drilling
- Milling
- Thread cutting, chasing, milling, rolling
- Hexagon socket (positioned: centric & eccentric)
- Torx or internal hexalobular socket  
(positioned: centric & eccentric)

## MACHINERY

- Mainly CNC machinery (up to 10 axes)
- Indexing table machines (Multiple processing steps)

## QUALITY / CERTIFICATION

- ISO 9001:2015 (since 2002)

## SERVICE

- Technical consulting / engineering & solution ideas
- Consignment stock / warehouse

### Anton Weiss GmbH

Am Forchenwald 3, 78559 Gosheim, Germany  
T +49 7426 5278-0, F +49 7426 527812  
info@weiss-drehteile.de, www.weiss-drehteile.de

